

PAQUISHA INMORTAL

Marcha Militar. Misraica.
Jose M. Bustamante Pelaez

A handwritten musical score for a march titled "PAQUISHA INMORTAL" by Jose M. Bustamante Pelaez. The score is written on ten systems of three staves each, using a treble and bass clef with a key signature of one sharp (F#) and a time signature of 8/8. The music features a variety of rhythmic patterns, including eighth and sixteenth notes, and rests. There are several dynamic markings such as *f* (forte) and *p* (piano). A prominent feature is a double bar line with a red "1" above and below it, indicating a first ending or a specific measure. The notation includes various musical symbols like beams, slurs, and accents, and the paper shows signs of age with some staining.

SATZ FÜR KLAVIER

This image shows a handwritten musical score for piano, consisting of 12 systems of staves. The notation is written in black ink on aged paper. The score is organized into systems, each containing a treble and bass staff. The key signature is one sharp (F#), and the time signature is 7/8. The notation includes various note values, rests, and dynamic markings such as *f* (forte) and *2* (second ending). There are several double bar lines and repeat signs throughout the piece. The handwriting is clear and legible, with some red ink used for the number '2' in several places, likely indicating second endings. The overall style is that of a personal manuscript or a composer's draft.

Handwritten musical notation on a single staff, featuring treble clef, a key signature of one sharp (F#), and a 3/4 time signature. The notation includes eighth and sixteenth notes, rests, and dynamic markings such as *f* and *mf*. The piece concludes with a double bar line and a repeat sign.

Handwritten musical notation on a single staff, continuing the piece with similar rhythmic patterns and dynamic markings.

Handwritten musical notation on a single staff, featuring a variety of note values and rests.

Handwritten musical notation on a single staff. A red '3' is written above the first measure. The word *trionfi.* is written above the staff. The notation includes triplets and dynamic markings.

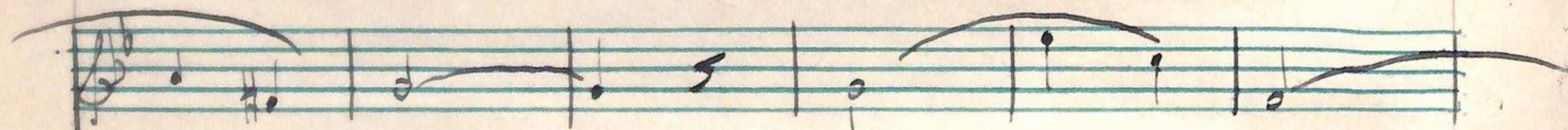
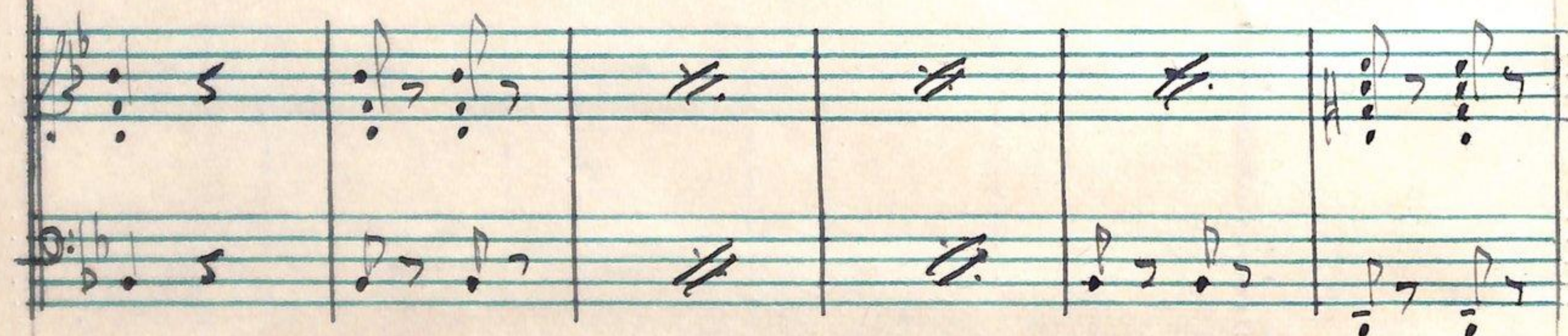
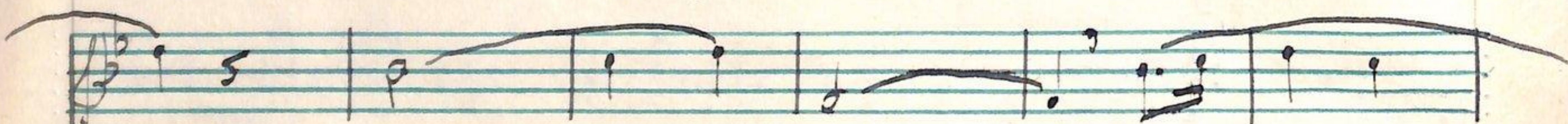
Handwritten musical notation on a single staff. A red '3' is written above the first measure. The notation includes rests and dynamic markings.

Handwritten musical notation on a single staff. A red '4' is written above the first measure. The word *TRIO.* is written above the staff. The notation includes a long note with a slur and dynamic markings.

Handwritten musical notation on a single staff. A red '4' is written above the first measure. The word *benor...* is written above the staff. The notation includes rests and dynamic markings.

Handwritten musical notation on a single staff, featuring a long note with a slur and dynamic markings.

Handwritten musical notation on a single staff, concluding the piece with various note values and rests.



Handwritten musical notation on a single staff, featuring various note values and rests.

Handwritten musical notation on a single staff, featuring various note values and rests.

Handwritten musical notation on a single staff, featuring various note values and rests.

Handwritten musical notation on a single staff, featuring various note values and rests. Includes a red '6' marking above the staff.

Handwritten musical notation on a single staff, featuring various note values and rests. Includes a red '6' marking above the staff.

Handwritten musical notation on a single staff, featuring various note values and rests. Includes a red '6' marking below the staff.

Handwritten musical notation on a single staff, featuring various note values and rests. Includes a red '6' marking below the staff.

Handwritten musical notation on a single staff, featuring various note values and rests.

Handwritten musical notation on a single staff, featuring various note values and rests.

Handwritten musical notation on a single staff, featuring various note values and rests.

Handwritten musical notation on a single staff, featuring various note values and rests.

Handwritten musical notation on a single staff, featuring various note values and rests.

Handwritten musical notation on a single staff, featuring various note values and rests.

