

# Crisagio Mariano

## Himno

S. Bustamante.

*Andante*

2<sup>o</sup> Solo

Ben di ta se a tu su re - za i eternamente lo se - a, que

*Coros*

to donn Dios se re - cre - a, en tan graciosa belle - za A Ei a Ei a

Handwritten musical notation for the first system. The vocal line is in G major, starting with a treble clef and a key signature of one sharp (F#). The lyrics are: "Ei a Ei ce - les - tial Prin - ce - sa Vir - gen Vir - gen". The piano accompaniment consists of chords in the right hand and a simple bass line in the left hand.

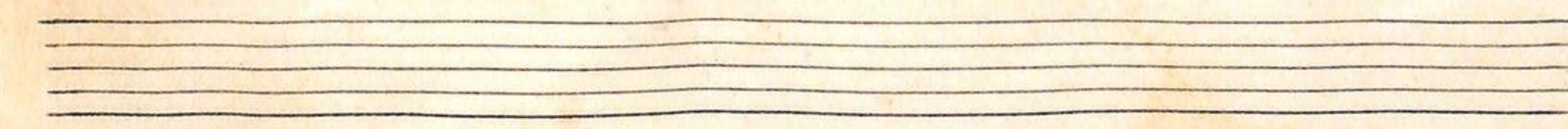
Handwritten musical notation for the second system. The vocal line continues with the lyrics: "sa - gra da Ma - ri - a te o frer eo des dees te di - a". The piano accompaniment continues with chords and a bass line.

Handwritten musical notation for the third system. The vocal line continues with the lyrics: "sa - gra da Ma - ri - a te o frer eo des dees te di - a". The piano accompaniment continues with chords and a bass line.

Handwritten musical notation for the fourth system. The vocal line continues with the lyrics: "sa - gra da Ma - ri - a te o frer eo des dees te di - a". The piano accompaniment continues with chords and a bass line.

Handwritten musical notation for the fifth system. The word "Menos" is written above the staff. The lyrics are: "al ma vi - da i co ra zon Ni - ra me con com pa sion". The key signature changes to F major (one flat). The piano accompaniment continues with chords and a bass line.

Handwritten musical notation for the sixth system. The vocal line continues with the lyrics: "al ma vi - da i co ra zon Ni - ra me con com pa sion". The piano accompaniment continues with chords and a bass line.



Handwritten musical score for the first system. It consists of three staves: a vocal line in treble clef with a key signature of one flat (B-flat), and two piano accompaniment staves in treble and bass clefs. The piano part features a rhythmic accompaniment with eighth and sixteenth notes, often beamed together. The lyrics "No me dejes Madre mi a" are written below the vocal line.

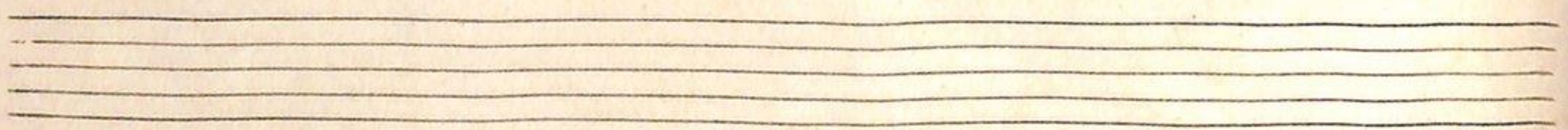
No me dejes Madre mi a

Handwritten musical score for the second system. It consists of three staves: a vocal line in treble clef with a key signature of one flat, and two piano accompaniment staves in treble and bass clefs. The piano part continues with a rhythmic accompaniment. The lyrics "mi - ra - me con" are written below the vocal line. The word "per tiempo" is written above the vocal line.

per tiempo  
mi - ra - me con

Handwritten musical score for the third system. It consists of three staves: a vocal line in treble clef with a key signature of one flat, and two piano accompaniment staves in treble and bass clefs. The piano part continues with a rhythmic accompaniment. The lyrics "com pasion No me de - jes Ma dre mi a No me" are written below the vocal line. The word "Despacio" is written above the vocal line.

Despacio  
com pasion No me de - jes Ma dre mi a No me



*dimin.*

de - jes Ma - dre mi - a.

This system contains a vocal line and a piano accompaniment. The vocal line is written in a soprano clef with a key signature of one flat and a common time signature. The lyrics are 'de - jes Ma - dre mi - a.' The piano accompaniment consists of two staves, with the right hand playing chords and the left hand playing a simple bass line. The music concludes with a double bar line.

# Versiculo

*Moderato*

San - ta San - ta San - ta Ma -

This system contains a vocal line and a piano accompaniment. The vocal line is written in a soprano clef with a key signature of one flat and a common time signature. The lyrics are 'San - ta San - ta San - ta Ma -'. The piano accompaniment consists of two staves, with the right hand playing chords and the left hand playing a simple bass line. The music concludes with a double bar line.

ni - a Ma - dre de Dios lle nos es -

This system contains a vocal line and a piano accompaniment. The vocal line is written in a soprano clef with a key signature of one flat and a common time signature. The lyrics are 'ni - a Ma - dre de Dios lle nos es -'. The piano accompaniment consists of two staves, with the right hand playing chords and the left hand playing a simple bass line. The music concludes with a double bar line.

can los cie - los i la tierra de vuestras glo - - -

rias de vuestras glo - rias

*El Pueblo*      *Coro*      *P.*

Glo riasa Mari a Hija del Pa - dre      Glo - ri a      Glo riasa Mari a Madre de

*C.*      *P.*      *C.*

Hiei - jo glo - ria gloriaa Mari a espo sa del Es - pi ri tu San to glo - - - rias

# COZOS

*Mesurado*

Cas tales po sa limpia Virgen, de in ma cu - la - da pu re za

a. Quien a - la ban los cie los i a - do ra bu mil - de la tie - ra

pa - lo - ma de a mor sin man eña, flor del va lle siem pre

fres-ca flor del valle siem pre fresca flor del valle siem pre

*Pueblo*

fres - ca A tus de vo tos am para i tus vir tu des en se - ña

Ante el decreto inmutable  
 que tu ardiente fe venera  
 asi, como esclava inclinas  
 tu angusta frente de Reyna  
 hágase en mi tu palabra  
 la voluntad de Dios sea.

Mas a Ti todos acuden  
 i socorres i consuelas  
 tus favores i tus gracias  
 derramando a manos llenas  
 nadie queda sin alivio  
 si con fe toco en tus puertas.

De tu estancia en el retiro  
 como Esposa i Madre tierna  
 paso tu vida Señora  
 de las familias maestra  
 bienes prodigando al hombre  
 hasta que al Eterno vuelas.