

Gonzalito

Sanjuanito

Handwritten musical notation for the first system of 'Gonzalito'. It consists of two staves: a treble clef staff on top and a bass clef staff on the bottom. The key signature has one flat (B-flat) and the time signature is 2/4. The music features a melody in the treble staff with eighth and sixteenth notes, and a bass line in the bass staff with quarter and eighth notes.

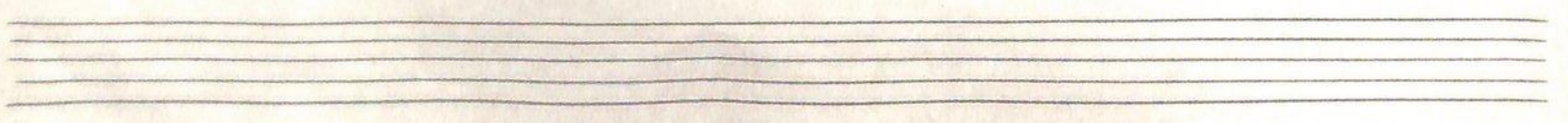
Handwritten musical notation for the second system of 'Gonzalito'. It consists of two staves: a treble clef staff on top and a bass clef staff on the bottom. The key signature has one flat (B-flat) and the time signature is 2/4. The music continues with a melody in the treble staff and a bass line in the bass staff.

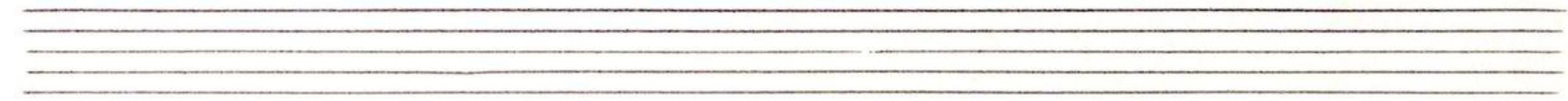
Handwritten musical notation for the third system of 'Gonzalito'. It consists of two staves: a treble clef staff on top and a bass clef staff on the bottom. The key signature has one flat (B-flat) and the time signature is 2/4. The music continues with a melody in the treble staff and a bass line in the bass staff.

Handwritten musical notation for the fourth system of 'Gonzalito'. It consists of two staves: a treble clef staff on top and a bass clef staff on the bottom. The key signature has one flat (B-flat) and the time signature is 2/4. The music continues with a melody in the treble staff and a bass line in the bass staff.

Intal.

Handwritten musical notation for the fifth system of 'Gonzalito', labeled 'Intal.'. It consists of two staves: a treble clef staff on top and a bass clef staff on the bottom. The key signature has one flat (B-flat) and the time signature is 2/4. The music continues with a melody in the treble staff and a bass line in the bass staff.





Incl.

Copia de José M. Bustamante P.